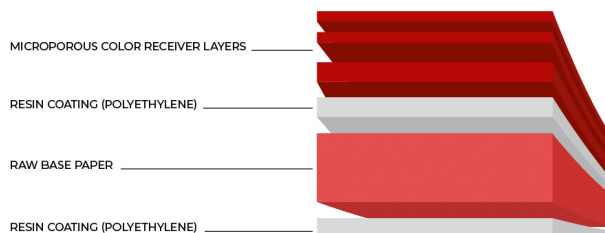


# P64321 TRUST premium Satin 190

## Microporous Resin-Coated Paper

### Printability

- simplex printable



### Product Specification

Property	Test Method	Dimension	Target	Tolerance
Weight	DIN EN ISO 536	g/m <sup>2</sup>	204	± 6
Thickness	DIN EN ISO 534	µm	210	± 6
	DIN EN ISO 536	mil	8.3	± 0.23
Gloss BYK	ISO 2813	60°	19	± 5
i1 Pro2		L*M0	95,8	
		a*M0	-0,2	
		b*M0	-2,3	
		L*MI	95,9	
		a*MI	-0,2	
		b*MI	-2,6	
Colour Elrepho UVO (D65)	ISO 2469	L	94,2	± 0,5
		a	-0,2	± 0,3
		b	-2,6	± 0,5
		delta b	-0,2	± 0,5
CIE Whiteness (D65/10°) min.	ISO 2469		> 94	
Opacity min.	ISO 2469	%	> 93	

### Printing Technology

- Inkjet water-based systems

### Certificates

- Fogra 39

Version: 08/2023

Store material only in original packaging under normal climatic conditions (23°C, 50 % RH). Protect material from direct sunlight. It is recommended to adapt the material to indoor climate at least 24 hours before usage.

This is not a commercial specification, but a technical data sheet that describes the main characteristic of the making. Modifications reserved. In case of question, please contact the Felix Schoeller product management.

[felix-schoeller.com](https://felix-schoeller.com)



**FELIX SCHOELLER**

# P64321 TRUST premium Satin 190

## Microporous Resin-Coated Paper

### Key Applications

- Check Proofs
- Halftone proof
- Mock-ups
- Proof & Prepress

### Benefits & Properties

- Instant dry
- Large colour gamut
- Reproducibility by outstanding media colour consistency
- Suitable for spot colours
- No matting due to a high ink load

Version: 08/2023

Store material only in original packaging under normal climatic conditions (23°C, 50 % RH). Protect material from direct sunlight. It is recommended to adapt the material to indoor climate at least 24 hours before usage.

This is not a commercial specification, but a technical data sheet that describes the main characteristic of the making. Modifications reserved. In case of question, please contact the Felix Schoeller product management.

[felix-schoeller.com](https://www.felix-schoeller.com)



**FELIX SCHOELLER**