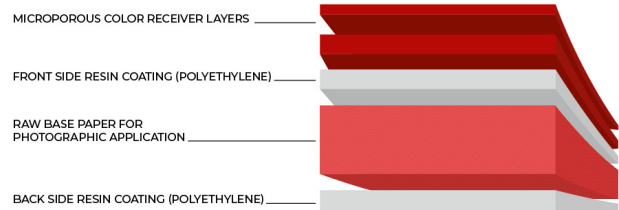


H63310 TRUST commercial Satin 175

Microporous Resin-Coated Paper

Printability

- simplex printable



Product Specification

Property	Test Method	Dimension	Target	Tolerance
Weight	DIN EN ISO 536	g/m ²	177	± 6
Thickness	DIN EN ISO 534	µm	183	± 6
	DIN EN ISO 536	mil	7.2	± 0.23
Gloss BYK	ISO 2813	60°	19	± 5
i1 Pro2		L*M0	94,2	
		a*M0	-0,4	
		b*M0	-1,6	
		L*MI	94,2	
		a*MI	-0,4	
		b*MI	-1,8	
Colour Elrepho UVO (D65)	ISO 2469	L	94,4	± 0,5
		a	-0,2	± 0,3
		b	-2,6	± 0,5
		delta b	0,1	± 0,5
CIE Whiteness (D65/10°) min.	ISO 2469		> 92	
Opacity min.	ISO 2469	%	> 94	

Printing Technology

- Inkjet water-based systems

Certificates

- Fogra 39

Version: 08/2023

Store material only in original packaging under normal climatic conditions (23°C, 50 % RH). Protect material from direct sunlight. It is recommended to adapt the material to indoor climate at least 24 hours before usage.

This is not a commercial specification, but a technical data sheet that describes the main characteristic of the making. Modifications reserved. In case of question, please contact the Felix Schoeller product management.

felix-schoeller.com



FELIX SCHOELLER

H63310 TRUST commercial Satin 175

Microporous Resin-Coated Paper

Key Applications

- Check Proofs
- Halftone proof
- Mock-ups
- Proof & Prepress

Benefits & Properties

- Instant dry
- Pin-sharp details
- Large colour gamut
- Reproducibility by outstanding media colour consistency
- Universal compatibility for printers and inks

Version: 08/2023

Store material only in original packaging under normal climatic conditions (23°C, 50 % RH). Protect material from direct sunlight. It is recommended to adapt the material to indoor climate at least 24 hours before usage.

This is not a commercial specification, but a technical data sheet that describes the main characteristic of the making. Modifications reserved. In case of question, please contact the Felix Schoeller product management.

felix-schoeller.com



FELIX SCHOELLER